



G3 Fine

Finishing Compound



PRODUCT DESCRIPTION

G3 Fine offers rapid removal of minor surface defects and swirl marks from all modern paint systems. Superb on darker colours.

G3 Fine is ideally applied using a Farécla G Mop Finishing Foam, which was engineered in tandem with the compound to provide optimum performance.

To remove residue and contaminants while adding shine and a breathable, water-resistant film, finish with Clean and Protect 1 L **CAP101** (SGA 780727**66935**).

PRODUCT INFORMATION

Size	Product Codes	Ctn Qty
500 g	G3F501 (SGA 780727 00143)	12
1 kg	G3F101 (SGA 780727 00141)	6

KEY BENEFITS

- | | |
|-------------------------------------|--|
| • FAST SCRATCH REMOVAL | Removes P3000 or finer sanding marks |
| • SWIRL REMOVER | Swirls and holograms eliminated permanently |
| • SURFACE RESTORER | Restores lightly oxidised paint work and dull surfaces |
| • VERSATILITY | Can be used by machine with foam or lambs wool applicator as well as by hand |
| • DRY USE & CLEAN TO USE | Easy clean up, minimal splatter or dusting |



USE WITH



G MOP BLACK FINISHING FOAMS

75 mm / 3" range

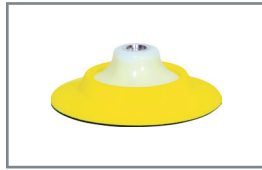
GMF301 (780727**00154**)

150 mm / 6" range

GMF622 (780727**69185**)

200 mm / 8" range

GMF822 (780727**69187**)



G MOP FLEXIBLE BACK PLATE FOR 150 MM / 6" RANGE PADS

14 mm thread

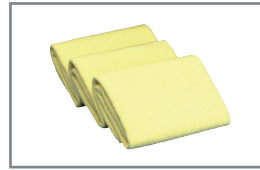
GMB146 (780727**00148**)

5/8" thread

GMB586 (780727**15924**)

16 mm thread

GMB166 (780727**15925**)



G PLUS FINISHING CLOTHS

(400 x 400 mm and edgeless)

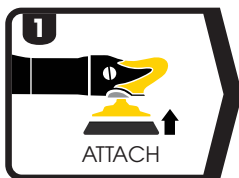
3 cloths

FC-3 (780727**00136**)

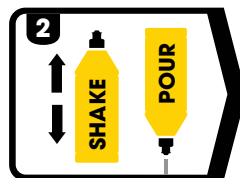
100 cloths

FC-100 (780727**09136**)

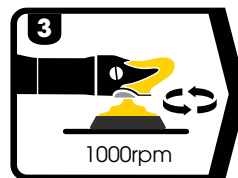
HOW TO USE



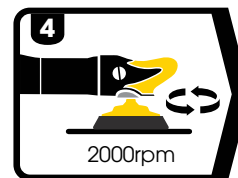
Attach a G Mop Finishing Foam to polishing machine



Shake well and dispense a small quantity onto the surface or pad



Start slowly, compounding at 1000rpm with the foam



Slowly increase speed to 2000rpm.
DO NOT ALLOW TO DRY



Wipe clean with Finishing Cloth

TECHNICAL INFORMATION

Appearance: **Thick white coloured liquid**

VOC Content: **0g/L**

Relative Density: **0.99**

pH: **8.5 - 9.5**

Paint Type Compliance: **All paint types**